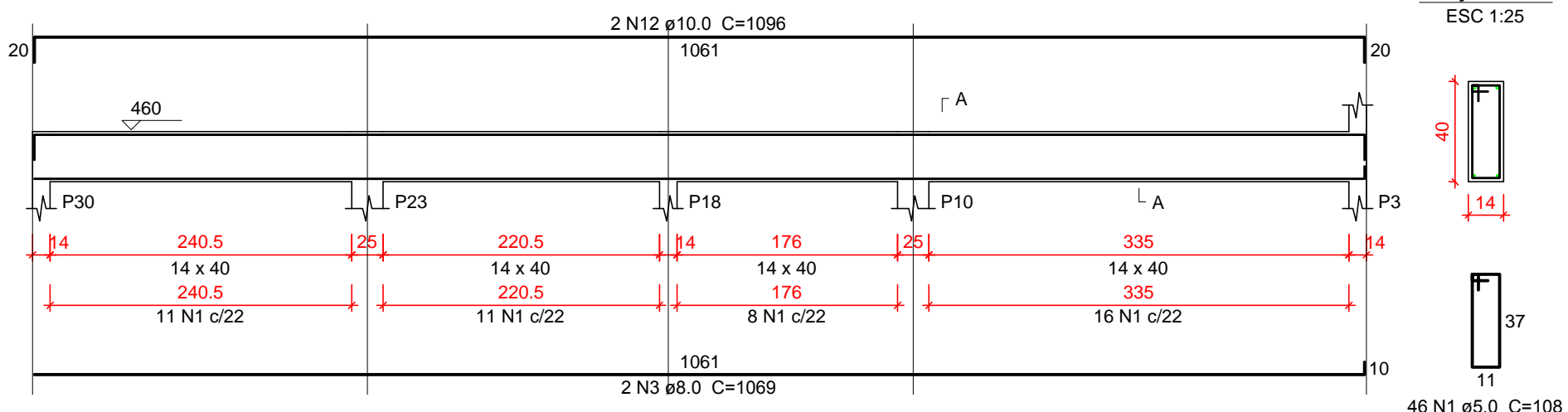


VIGAS INTERMEDIÁRIAS 03

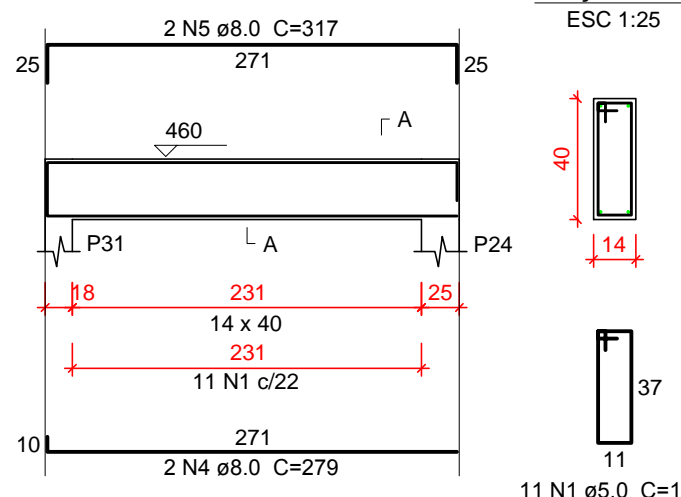
VI-29

ESC 1:50



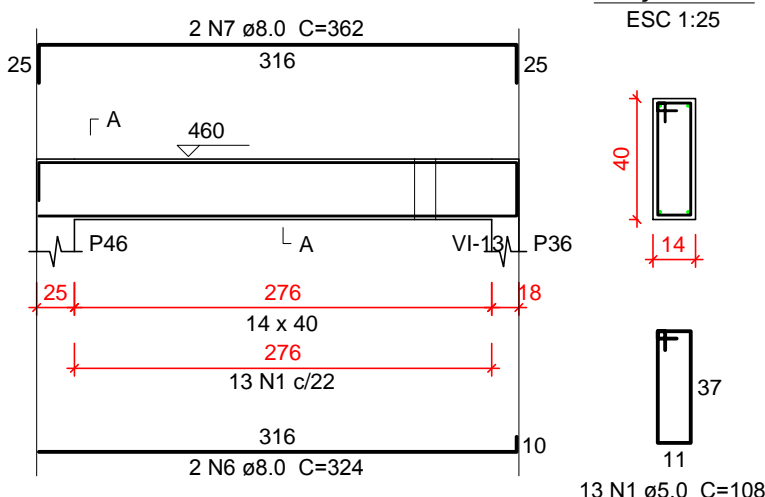
VI-30

ESC 1:50



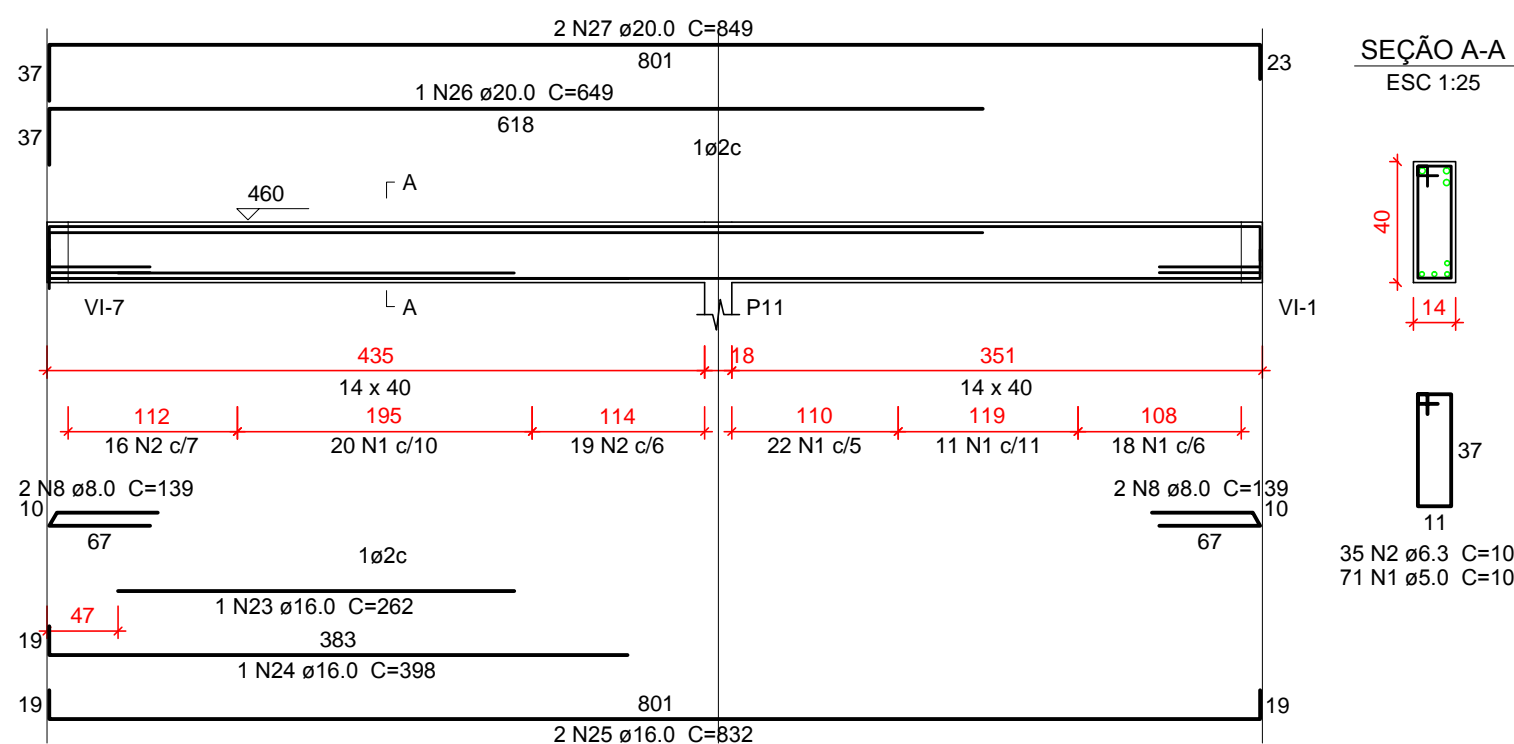
VI-31

ESC 1:50



VI-32

ESC 1:50



Relação do aço

AÇO	N	DIAM (mm)	QUANT (Barra)	UNIT (cm)	C.TOTAL (cm)
VI-29	1	5.0	300	108	32400
VI-32	2	6.3	30	108	3780
VI-35	3	8.0	2	1069	2138
	4	8.0	2	279	558
	5	8.0	2	317	634
	6	8.0	2	324	648
	7	8.0	2	362	724
	8	8.0	4	139	556
	9	8.0	2	135	270
	10	8.0	1	91	91
	11	8.0	2	830	1660
	12	10.0	2	1096	2192
	13	10.0	2	984	1968
	14	10.0	2	593	1186
	15	10.0	8	96	768
	16	10.0	2	891	1782
	17	12.5	2	933	1866
	18	12.5	2	378	756
	19	12.5	2	1150	2300
	20	12.5	2	216	432
	21	12.5	2	1200	2400
	22	12.5	2	468	936
	23	16.0	1	282	282
	24	16.0	1	398	398
	25	16.0	2	832	1664
	26	20.0	1	649	649
	27	20.0	2	849	1698

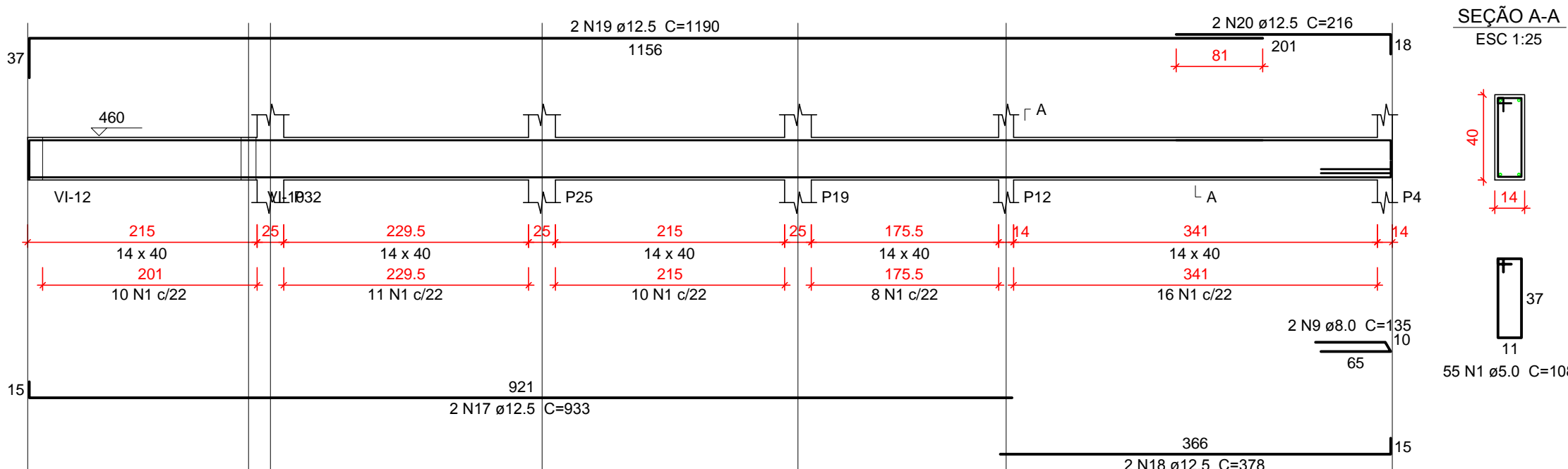
Resumo do aço

AÇO	DIAM (mm)	C.TOTAL (m)	PESO + 10 % (kg)
CA50	6.3	37.8	10.2
	8.0	72.8	31.6
	10.0	78.2	53
	12.5	87.7	92.9
	16.0	23.3	40.3
	20.0	23.5	63.7
	25.0	324	54.9
PESO TOTAL (kg)			
CA50	291.7		
CA60	54.9		

Volume de concreto (C-25) = 3.43 m³  
Área de forma = 57.63 m²

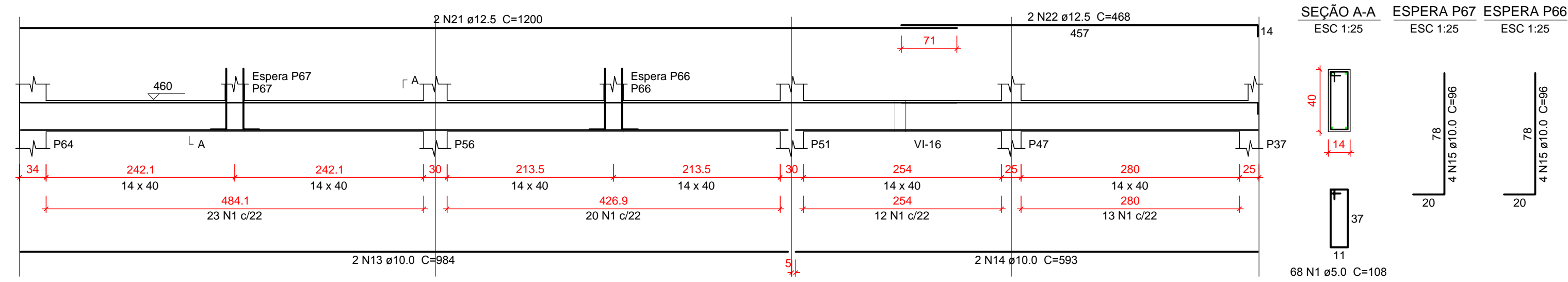
VI-33

ESC 1:50



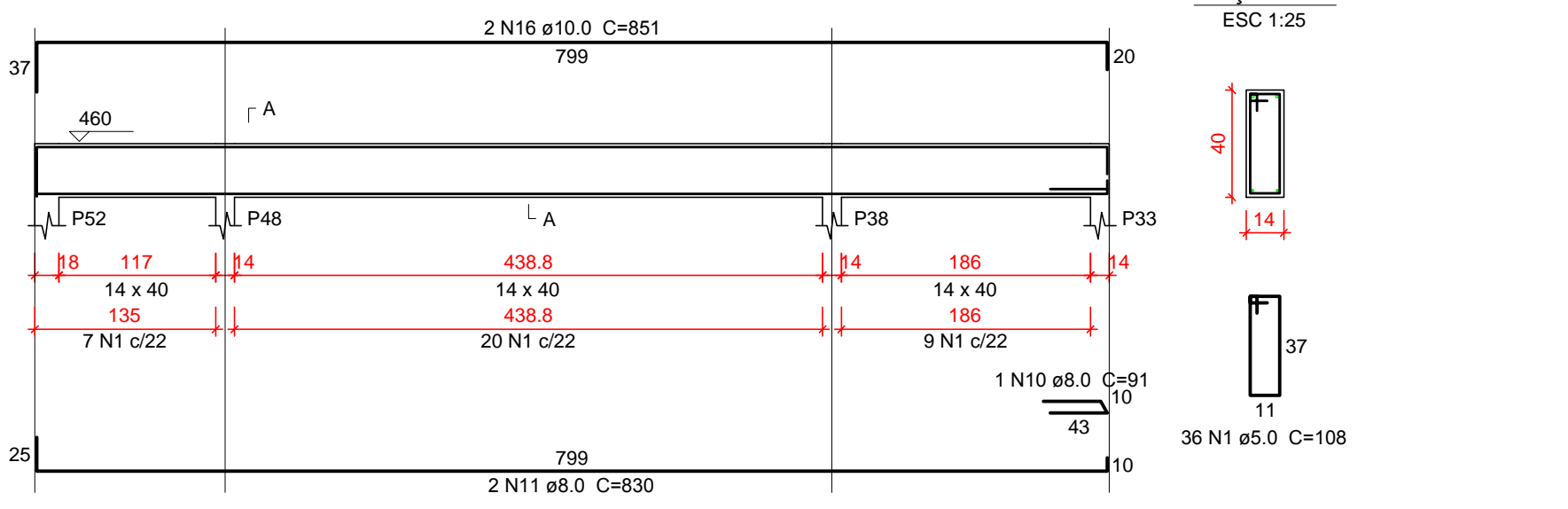
VI-34

ESC 1:50



VI-35

ESC 1:50



Relação do aço

AÇO	N	DIAM (mm)	QUANT (Barra)	UNIT (cm)	C.TOTAL (cm)
VR-1	1	5.0	162	88	14226
VR-4	2	5.0	422	78	32916
VR-5	3	8.0	2	908	1816
	4	8.0	2	558	1116
	5	8.0	2	1196	2392
	6	8.0	2	351	702
	7	8.0	4	984	3936
	8	8.0	2	1040	2080
	9	8.0	2	846	1692
	10	8.0	2	1198	2396
	11	8.0	2	1200	2400
	12	8.0	2	545	1090
	13	8.0	2	927	1854
	14	8.0	2	364	728
	15	8.0	2	1173	2346
	16	8.0	2	175	350
	17	8.0	2	593	1186
	18	8.0	2	1198	2396
	19	8.0	2	481	962
	20	10.0	2	1198	2396
	21	10.0	2	394	788
	22	10.0	2	1198	2396
	23	10.0	2	377	754

Resumo do aço

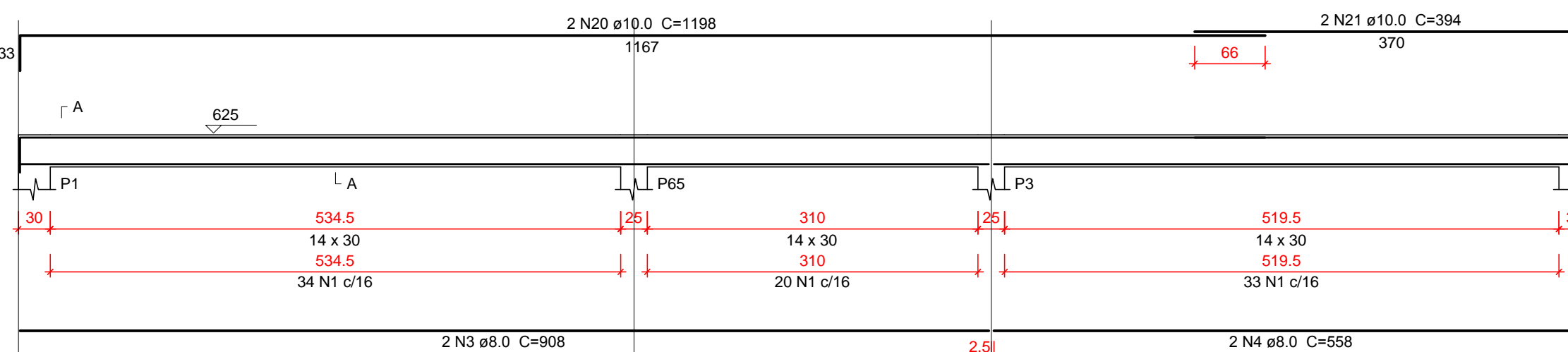
AÇO	DIAM (mm)	C.TOTAL (m)	PESO + 10 % (kg)
CA50	8.0	294.5	127.8
	10.0	63.4	43
CA60	5.0	471.8	80
PESO TOTAL (kg)			
CA50	170.7		
CA60	80		

Volume de concreto (C-25) = 3.23 m³  
Área de forma = 58.34 m²

VIGAS RESPALDO

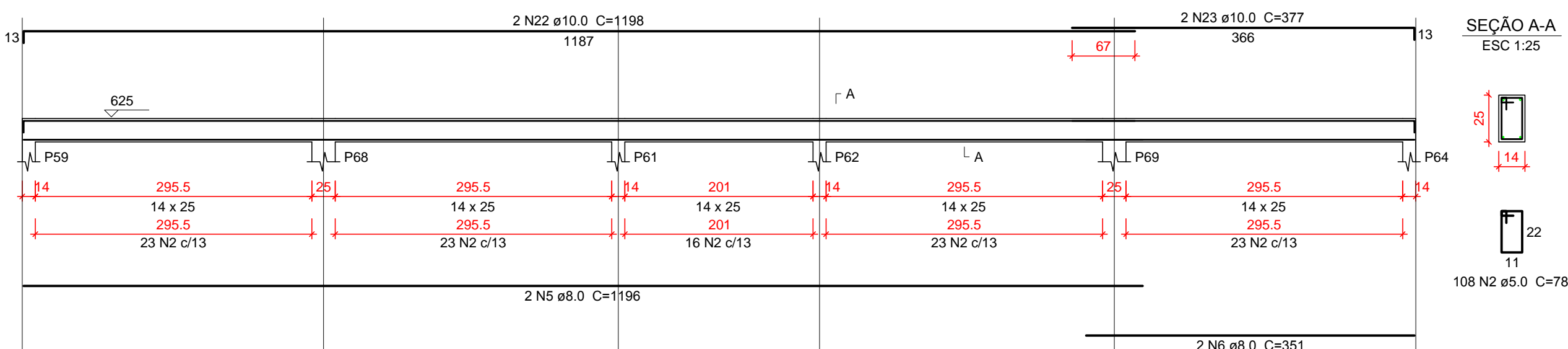
VR-1

ESC 1:50



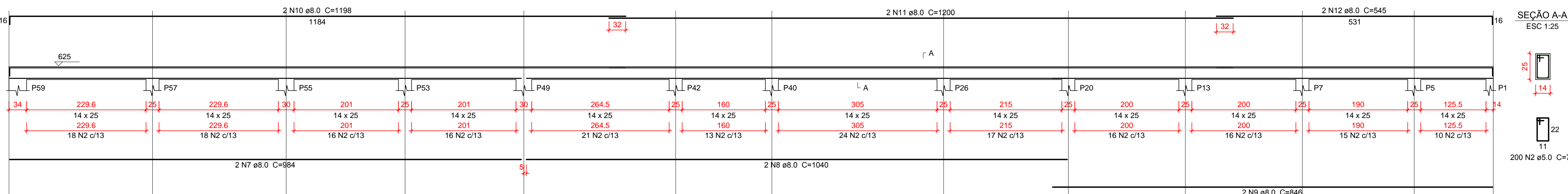
VR-2

ESC 1:50



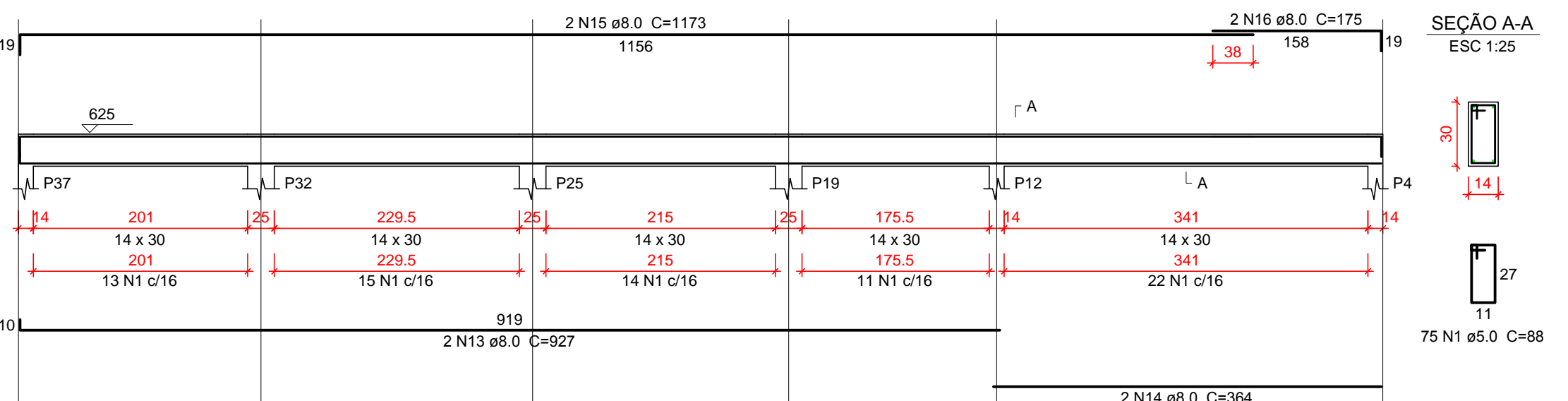
VR-3

ESC 1:50



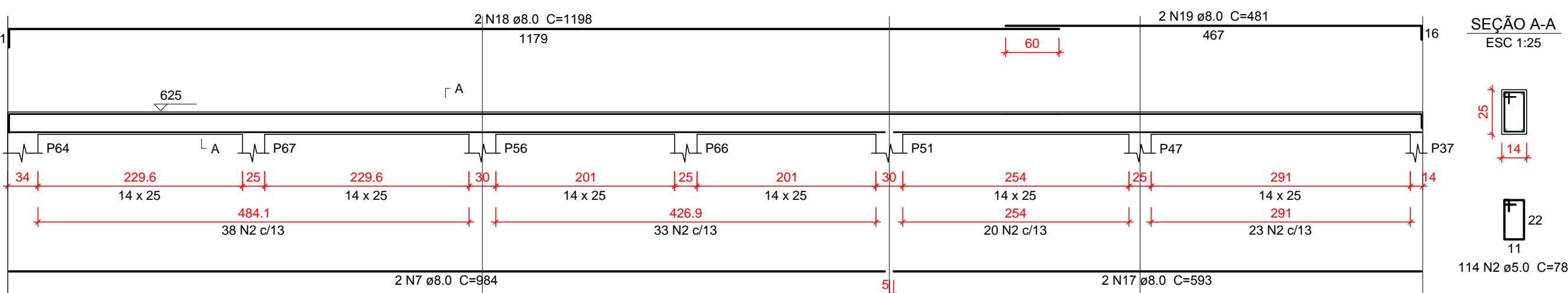
VR-4

ESC 1:50



VR-5

ESC 1:50



APROVAÇÃO:

ESTATÍSTICAS:

VER PROJETO ARQUITETÔNICO

PROJETO ESTRUTURAL

REFERÊNCIA:  
ARMAÇÃO DAS VIGAS INTERMEDIÁRIAS E RESPALDO

FOLHA Nº: 10/13  
OBRA: HOSPITAL BENEFICENTE MOACIR MICHELETTO  
LOCAL: RUA CURITIBA, LOTE 8, QUADRA C. JD. AMÉRICA - ASSIS CHATEAUBRIAND/PR  
ESCALA: INDICADA  
DATA: DEZEMBRO 2014  
DESENHO: REVISÃO:

PROJETO:

EXECUÇÃO: