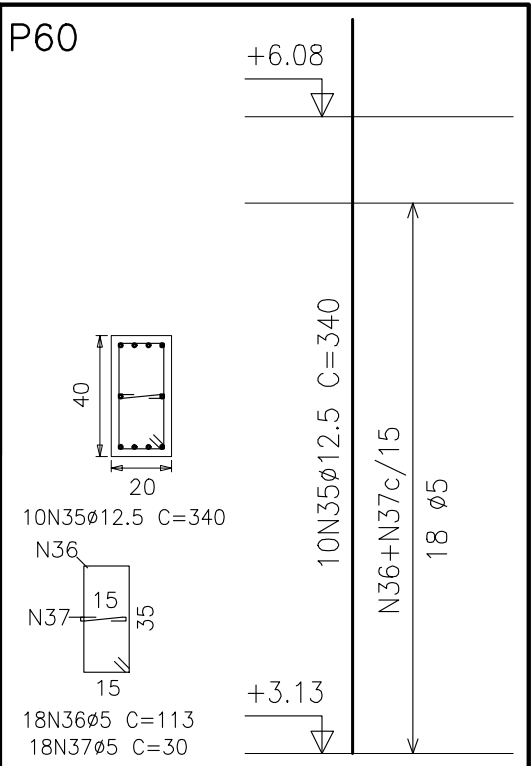
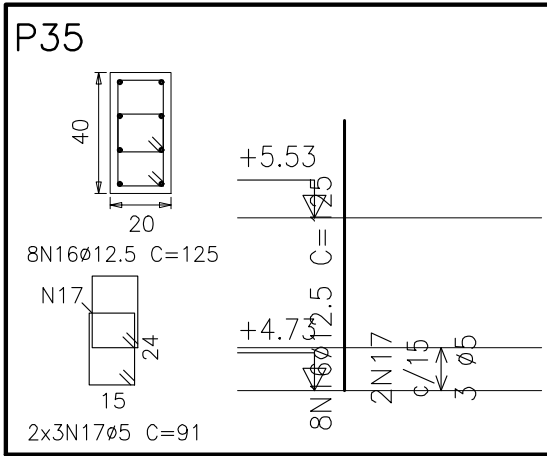
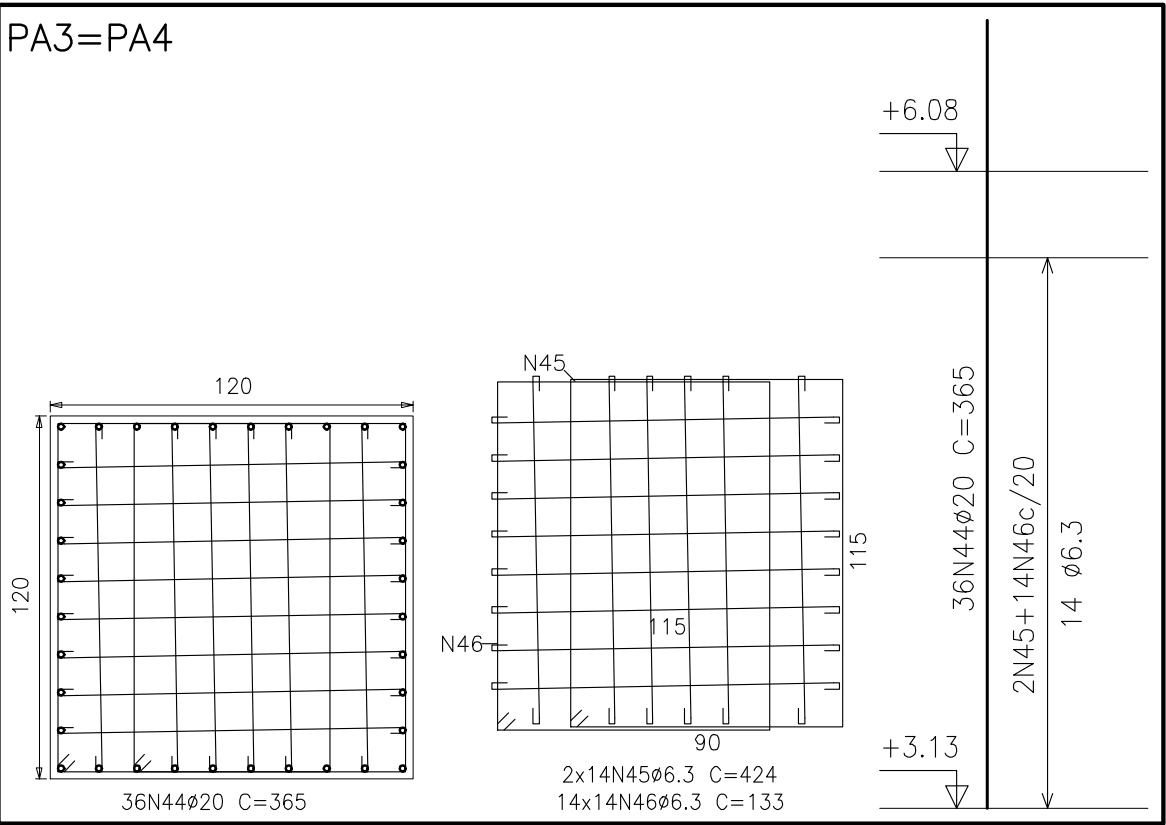
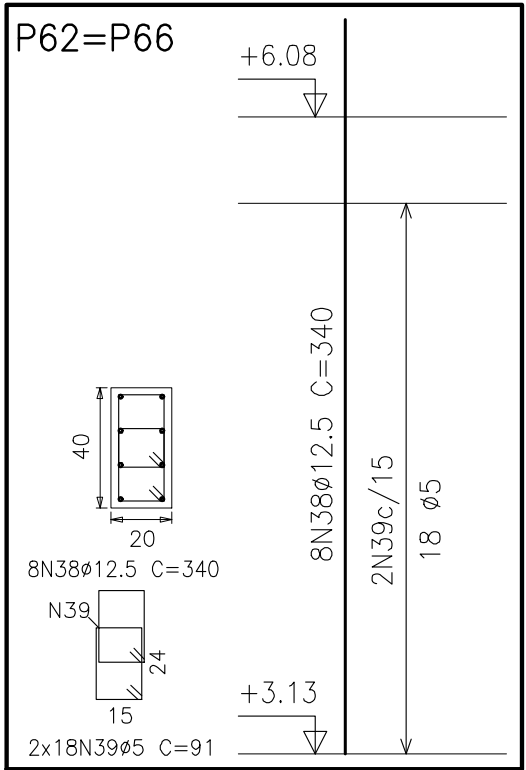
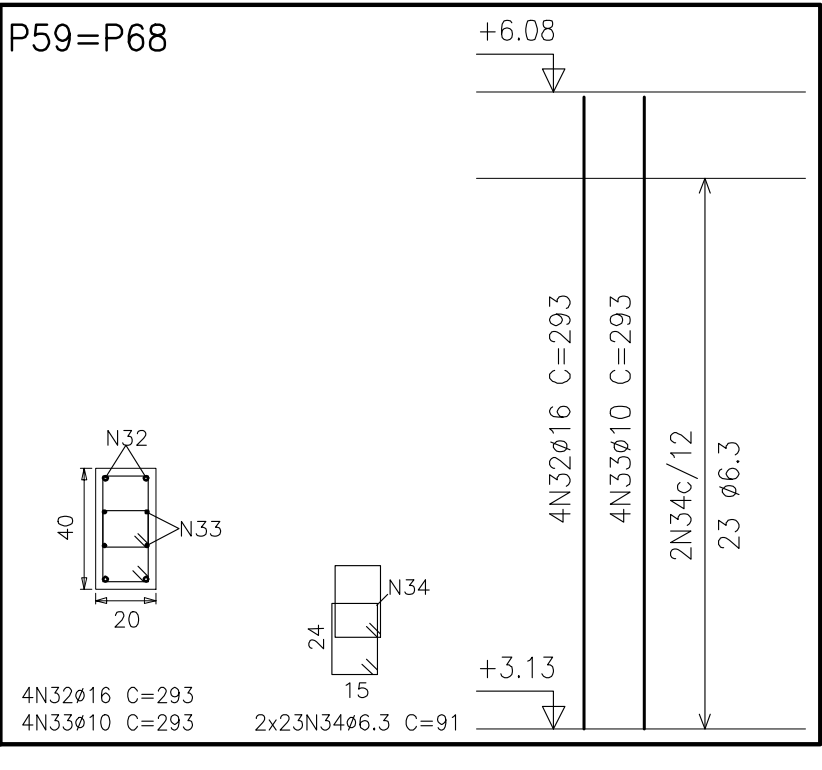
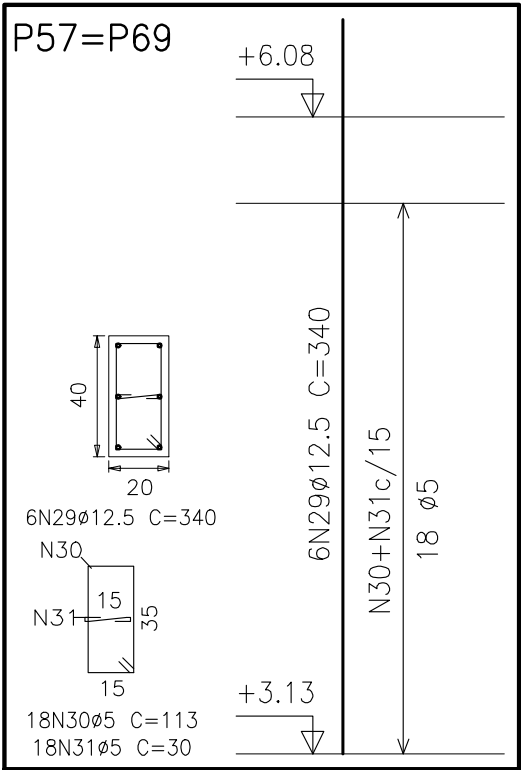
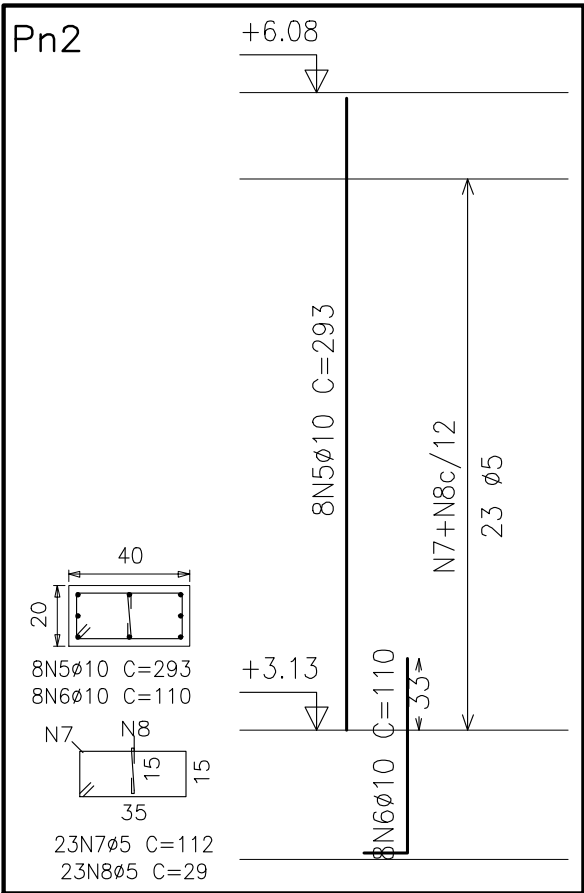
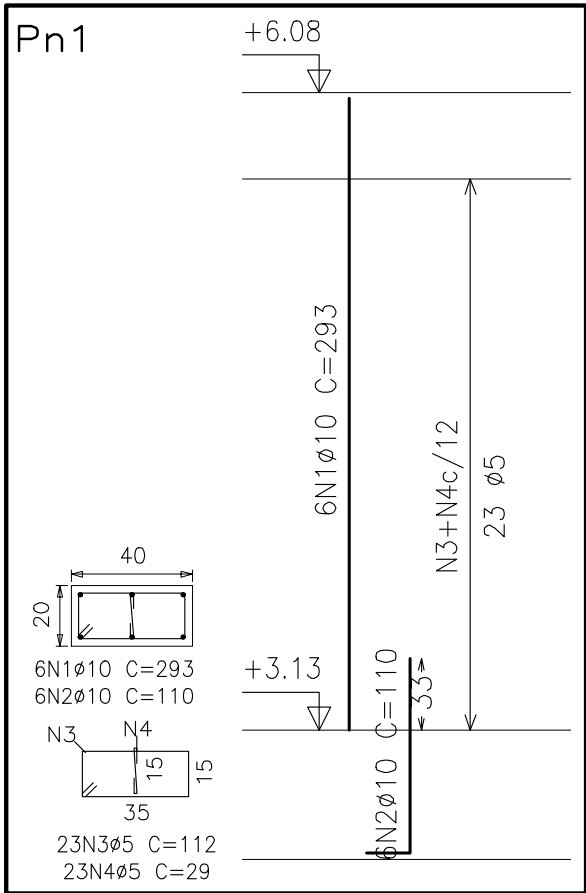
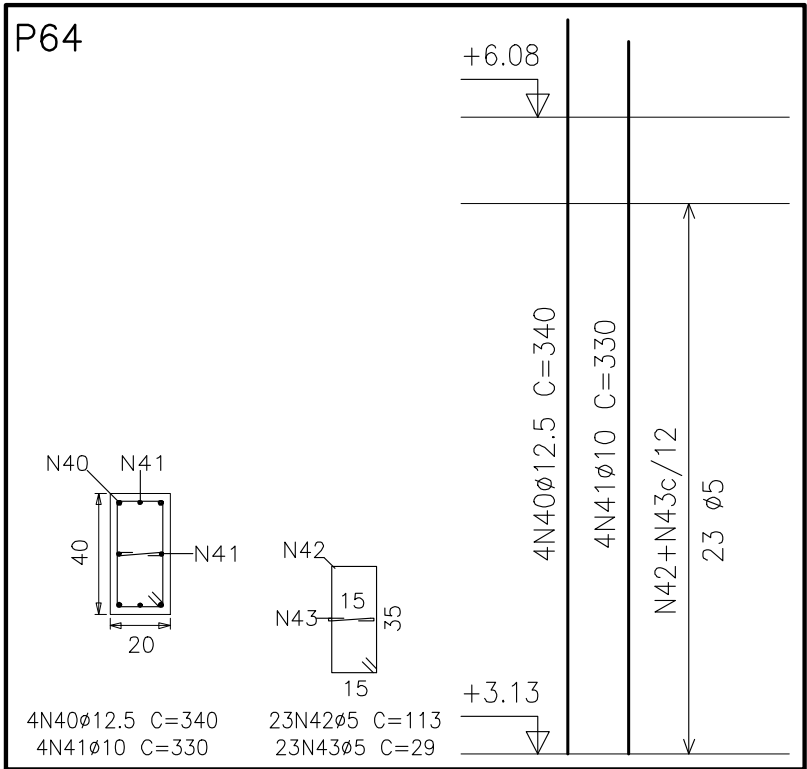
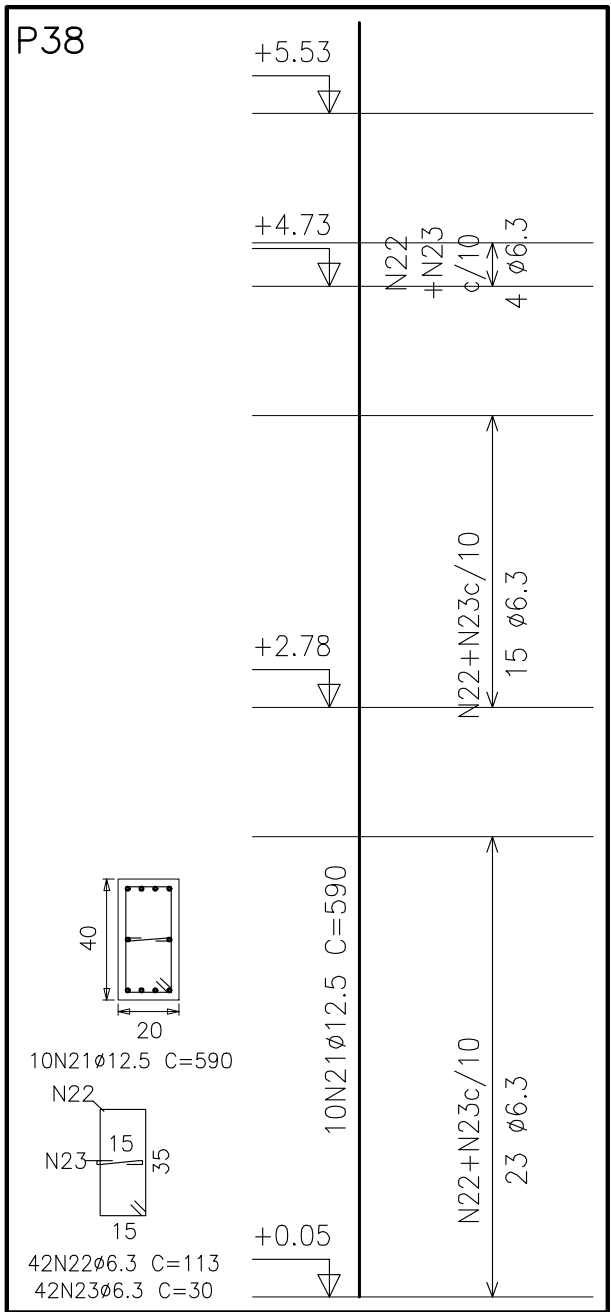
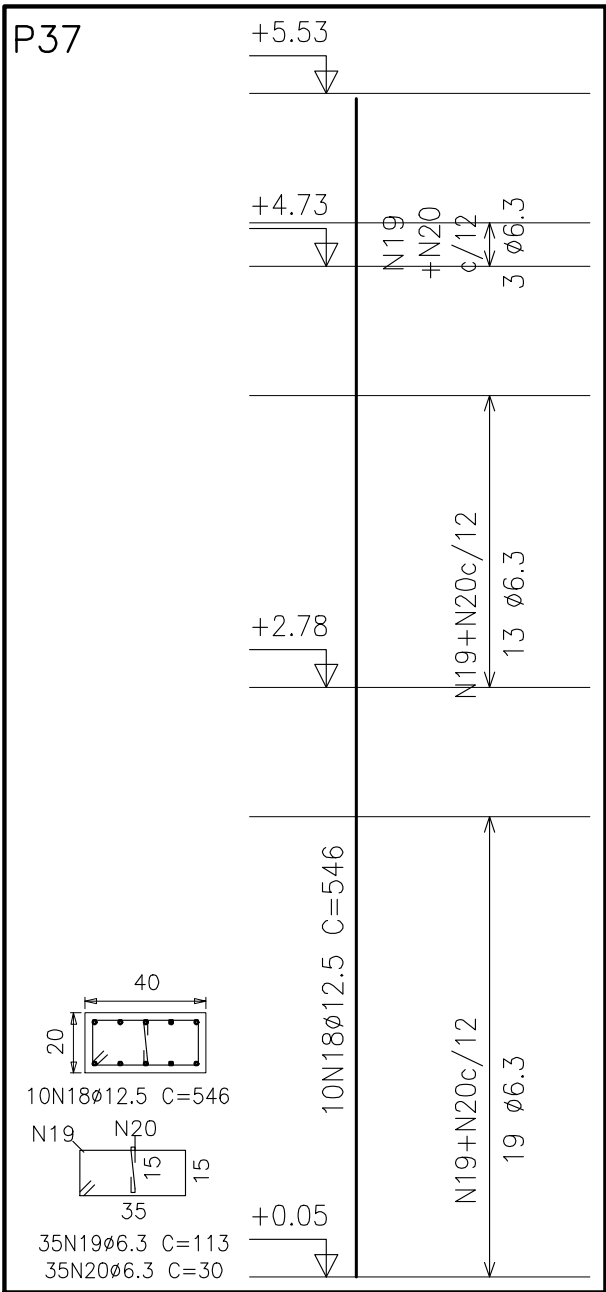


Elemento	Pos.	Diam.	Q.	Dob. (cm)	Reta (cm)	Dob. (cm)	Comp. (cm)	Total (cm)	CA-50-A (kg)	CA-60-B (kg)
Pn1	1	Ø10	6	293		293	1758	11.0		
	2	Ø10	6	20	90	110	660	4.1		
	3	Ø5	23	112		112	2576		4.0	
	4	Ø5	23	29		29	667		1.0	
Total:									15.1	5.0
Pn2	5	Ø10	8	293		293	2344	14.7		
	6	Ø10	8	20	90	110	880	5.5		
	7	Ø5	23	112		112	2576		4.0	
	8	Ø5	23	29		29	667		1.0	
Total:									20.2	5.0



Pilares que terminam em  
2º Pavimento  
Concreto: C30, em geral  
Aço: CA-50-A e CA-60-B  
Escala horizontal: 1:25  
Escala vertical: 1:35

Elemento	Pos.	Diam.	Q.	Dob. (cm)	Reta (cm)	Dob. (cm)	Comp. (cm)	Total (cm)	CA-50-A (kg)	CA-60-B (kg)
P34	9	Ø12.5	4		545		545	2180	21.4	
	10	Ø10	6		545		545	3270	20.5	
	11	Ø6.3	42		113		113	4746	11.7	
	12	Ø6.3	42		29		29	1218	3.0	
	Total:								56.6	
P35	13	Ø12.5	6		240		240	1440	14.1	
	14	Ø5	10		113		113	1130		1.8
	15	Ø5	10		30		30	300		0.5
	Total:								14.1	2.3
P35	16	Ø12.5	8		125		125	1000	9.8	
	17	Ø5	6		91		91	546		0.9
	Total:								9.8	0.9
P37	18	Ø12.5	10		545		545	5450	53.5	
	19	Ø6.3	35		113		113	3955	9.8	
	20	Ø6.3	35		30		30	1050	2.6	
	Total:								65.9	
P38	21	Ø12.5	10		590		590	5900	57.9	
	22	Ø6.3	42		113		113	4746	11.7	
	23	Ø6.3	42		30		30	1260	3.1	
	Total:								72.7	
P49=P50	24	Ø10	8		545		545	4360	27.4	
	25	Ø5	35		112		112	3920		6.2
	26	Ø5	35		29		29	1015		1.6
	Total:								27.4	7.8
P54	27	Ø12.5	8		590		590	4720	46.3	
	28	Ø6.3	84		91		91	7644	18.9	
	Total:								65.2	
P57=P69	29	Ø12.5	6		340		340	2040	20.0	
	30	Ø5	18		113		113	2034		3.2
	31	Ø5	18		30		30	540		0.8
	Total:								20.0	4.0
P59=P68	32	Ø16	4		293		293	1172	18.4	
	33	Ø10	4		293		293	1172	7.4	
	34	Ø6.3	46		91		91	4186	10.4	
	Total:								36.2	8.0
P60	35	Ø12.5	10		340		340	3400	33.4	
	36	Ø5	18		113		113	2034		3.2
	37	Ø5	18		30		30	540		0.8
	Total:								33.4	4.0
P62=P66	38	Ø12.5	8		340		340	2720	26.7	
	39	Ø5	36		91		91	3276		5.1
	Total:								26.7	5.1
P64	40	Ø12.5	4		340		340	1360	13.3	
	41	Ø10	4		330		330	1320	8.3	
	42	Ø5	23		113		113	2599		4.1
	43	Ø5	23		29		29	667		1.0
PA3=PA4	44	Ø20	36		365		365	13140	324.9	
	45	Ø6.3	28		424		424	11872	29.4	
	46	Ø6.3	196		133		133	26068	64.5	
	Total:								418.8	
								(x2):	837.6	
								Ø5:	0.0	56.1
								Ø6.3:	269.4	0.0
								Ø10:	133.7	0.0
								Ø12.5:	343.1	0.0
								Ø16:	36.8	0.0
								Ø20:	649.8	0.0
								Total:	1432.8	56.1



## ARMADURAS DOS PILARES QUE TERMINAM EM 2º PAVIMENTO (02/02)

SEM ESCALA - VER DETALHE DE ESPERAS

FCK=30.0 MPa - FATOR H<sub>2</sub>O/CIMENTO=0.58

 projetos complementares		<div>07/03/2015 DATA</div> <div>REV00 - PILOTAGEM INICIAL REVISÃO/AUTORIZAÇÃO</div>	
<b>PROJETO ESTRUTURAL CONCRETO</b>			
OBRA: ARENA - CENTRO DE EVENTOS			
PROPRIETÁRIO: PREFEITURA MUNICIPAL DE SÃO JORGE DO IVAÍ			
CONTEÚDO: ARMADURA DOS PILARES QUE TERMINAM EM 2º PAVIMENTO (02/02)			
LOCAL: RUA DR. MICHEL FELIPE - LOTE 126-B - GLEBA ANDRÁ - SÃO JORGE DO IVAÍ - PARANÁ			
141220-EST_LA_R01.dwg		RESPONSÁVEL TÉCNICO PELO PROJETO	
DATA: MARÇO/2015			
Nº PÁGINAS 13/28		PAULO LEÃO ENGENHEIRO CIVIL CREA nº 45577 www.ileaoprojetos.com.br	